

NEW

INTERACT™ | AT

Premium Conferencing System

A complete conference room solution with flexibility in mind. The INTERACT AT includes all the necessary audio equipment and peripherals for any conference room while delivering exceptional audio quality at an affordable price.

Customize your solution with multiple microphones and speaker options, direct connection to enterprise telephones, USB audio, a room controller, plus the ability to connect to the rich-media systems.

ClearOne®



A USB-ENABLED
AUDIO
CONFERENCING
SOLUTION

APPLICATIONS

- + Unified Communications
- + Use with Rich-Media Systems
 - > Web Conferencing
 - > Personal Computer
 - > IP Telephony
 - > Video Conferencing
- + Board Rooms
- + Conference Rooms
- + Executive Offices

ADVANTAGES

- + Enables Unified Communication in the conference room
- + USB port connects to PC for Skype, WebEx and other A/V conferencing applications
- + Headset port connects to Cisco, Avaya, and Nortel handsets
- + Sound quality exceeds traditional conference phone with ClearOne's HDConference technology
 - > Simplified installation combines all microphone signals onto a single data cable minimizing conduit and raceway requirements.
 - > Noise cancellation reduces background noises from fans or HVAC systems
 - > Automatic level controls keep participants' audio balanced and consistent
- + Scalable and flexible
 - > Wireless or wired controller option
 - > Multiple speaker mount options: wall, ceiling or custom
 - > Select appropriate number of MIC EX and MIC PODS (max three) to fit the applications
- + Integral network management system enables remote configuration, control and monitoring
- + Interoperates with NetStreams™ A/V over IP systems
- + Easy to install, program and use

HDConference™

> Components



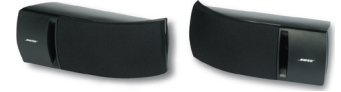
INTERACT AT MIXER
Provides advanced audio processing for superior sound quality.



INTERACT MIC
Each pod features three voice-activated mic elements for 360-degree audio pickup.



INTERACT COM (Wired or Wireless)
Provides an interface to telephone sets via the headset port or to PC audio via a USB port. The Wireless Com provides the interface to a wireless controller.



BOSE® LOUDSPEAKERS
Ceiling or wall-mount options provide premium sound. Also available without speakers for custom speaker options.



INTERACT DIALER
Wired or wireless controller provides intuitive interface that emulates a telephone keypad.



INTERACT MIC EX
Each box contains three industry standard XLR microphone connectors. Boxes are daisy-chained from mixer using standard RJ-45 cables. Boxes can be rack-mounted with mixer or strategically positioned throughout room to minimize microphone cable runs.



> SPECIFICATIONS

Optional accessories available individually or in predefined bundles.

AUDIO PERFORMANCE

Conditions: Unless otherwise specified, all measurements are performed from 20 Hz to 15 kHz BW limit (No Weighting)
Dynamic Range: > 80 dB (Non-A Weighted)
THD+N: < 0.02 %

AUDIO MIXER

AEC tail time: 128 ms
Adaptive Noise Cancellation: 6-15 dB
Gating: Adaptive ambient, 1st Mic Priority, Look-ahead Gating
Up to a total of 3 INTERACT MIC or INTERACT MIC EX devices can be connected to the INTERACT AT Mixer
48 kHz Sample Rate, 24-bit Resolution

AUDIO MIXER LINE INPUT

Connection: Unbalanced RCA
Impedance: 10 kΩ
Nominal Level: -10 dBu
Maximum Level: +9 dBu

AUDIO MIXER PLAYBACK

Connection: Unbalanced Left and Right RCA (Summed Internally)
Impedance: 10 kΩ
Nominal Level: -10 dBu
Maximum Level: +15 dBu

AUDIO MIXER LINE OUTPUT

Connection: Unbalanced RCA
Impedance: 10 kΩ
Nominal Level: -10 dBu
Maximum Level: +9 dBu

AUDIO MIXER RECORD OUTPUT

Connection: Unbalanced Left and Right RCA (Mono Source Split Internally)
Impedance: 10 kΩ
Nominal Level: -10 dBu
Maximum Level: +9 dBu

AUDIO MIXER AMPLIFIER OUTPUT

Connection: Left and Right Push Terminals
Power: 5 Watts
Frequency Response: 20 Hz – 15 kHz (+/-1 dB)
Dynamic Range: > 80 dB
THD+N: < 0.50% (+5 dBu Line Input @ 1 kHz)

TELEPHONE INTERFACE

Telephone Audio Performance
Conditions: Unless otherwise specified, all measurements are performed with Transmit Limiter and Receive ALC disabled
Frequency Response: 250 Hz to 3.3 kHz ±1 dB
THD+N: < 0.30% re-max level 250 Hz to 3.3 kHz
SNR: > 62 dB re-max level
Telco Line Echo Cancellation
Tail Time: 32 ms
Null: 55 dB Nominal
Telephone Noise Cancellation
Noise Cancellation 6-15 dB Attenuation

RS-232 CONTROL PORT

DB9 Female
Baud Rates: 9,600 / 19,200 / 38,400 / 57,600 (Default) / 115,200
Protocol: 8 Bit, 1 Stop, No Parity
Hardware Flow Control ON (Default)/OFF

USB CONFIGURATION PORT

USB 1.1 Compatible
Type: B Connector

VISCA CAMERA PORT

Din, 9600 Baud, No Flow Control

LAN

10/100 Ethernet
RJ-45 with Activity LED
Supports: Telnet, HTTP

LINK BUS

Connection: RJ-45 with CAT5 Daisy-chained

Maximum Distance: 60 feet from Mixer to last device in chain

Maximum Number of INTERACT MIC Devices:
3 - Any Mix of INTERACT MIC or MIC EX

Maximum Number of INTERACT COM Devices:
1 per INTERACT Mixer

CONFIGURATION SOFTWARE

INTERACT Supports:
Microsoft XP, Vista and Windows 7

INTERACT COM

Versions:
Wired or Wireless (2.4 GHz)

USB AUDIO CHANNEL:

USB 2.0 Compatible
Connector: Mini Type B
TX and RX Channel, 16-bit at 16 kHz

HEADSET AUDIO CHANNEL:

Connector: RJ-9
Supported Telephone Sets: Most Cisco, Avaya, and Nortel Phones
Audio Performance
Frequency Response: 40 to 3300 Hz
THD and Noise: < 0.04% Re-max Level with 0 dB Gain @ 1 kHz
Dynamic Range: > 84 dB (Non A-Weighted)

Audio Processing:

Receive Automatic Level Control
Line Echo Cancellation for Side-Tone Elimination

GPIO:

Pin 1: Global Mute (C)
Pin 2: Global Mute (S)
Pin 3: ON/OFF Hook (C)
Pin 4: ON/OFF Hook (S)
Pin 5: 5V DC up to 40 mA

INTERACT DIALER

Available in Wired or Wireless Versions
Functions: Dialing, Volume Control, Mute Control
Communications:
Wired Version: RS-232 Connected to Mixer
Wireless Version: 2.4 GHz DSSS to INTERACT COM Wireless

INTERACT MIC – TABLETOP MICROPHONE

Coverage: 360°
Frequency Response: 60 Hz- 14 kHz
THD+N: < 0.08% (-45 dBu Input @ 1 kHz)
Sensitivity: -45 dBu

INTERACT MIC EX - MICROPHONE

DISTRIBUTION BOX
Connection: Female XLR Balanced
Maximum Level: +18 dBu
Frequency Response:
20 Hz – 15 kHz THD + N: < 0.01 %
Phantom Power: 24 V @ 10 mA
Impedance: 5 kΩ per Leg or 10 kΩ Balanced

POWER SUPPLY

Primary Voltage: 100 to 240 VAC
Auto-Sensing, 50-60 Hz
Power Consumption: 32 W Maximum

DIMENSIONS (W X D X H)

INTERACT AT Mixer: 17" x 7.5" x 2"
(43.2 cm x 19.1 cm x 5.1 cm)

INTERACT DIALER: 10.5" x 4.5" x 2.75"
(26.7 cm x 11.4 cm x 6.9 cm)

INTERACT MIC EX: 4.7" x 5.6" x 1.7"
(11.9 cm x 14.3 cm x 4.4 cm)

INTERACT COM: 4.7" x 5.6" x 1.7"
(11.9 cm x 14.3 cm x 4.4 cm)

INTERACT MIC: Diameter: 7" (17.8 cm)
Height: 1.5" (3.8 cm)

WEIGHT

INTERACT AT Mixer: 4.5 lb. (2 kg)
INTERACT DIALER: 2.0 lb. (0.9 kg)
INTERACT MIC: 1.5 lb. (0.7 kg)
INTERACT MIC EX: 1.5 lb. (0.7 kg)
INTERACT COM: 1.5 lb. (0.7 kg)

COMPLIANCE

ROHS Compliant
WEEE Compliant
UL Safety Listed
AES48-2005 AES Standard on Grounding and EMC Practice

PART NUMBERS

Complete Room Solutions:
Call ClearOne for complete listing of room options.

INTERACT AT: 910-154-010

INTERACT COM: 910-154-030

INTERACT COM-W (For Wireless Dialer):
910-154-050

INTERACT MIC: 910-154-015

INTERACT MIC EX: 910-154-020

INTERACT DIALER: 910-154-035

INTERACT Dialer W (Wireless): 910-154-040

Bose™ Wall Speaker: 910-103-061L

Bose Ceiling Speaker: 910-154-016

> CLEARONE LOCATIONS

Headquarters:
Salt Lake City, UT USA
5225 Wiley Post Way
Suite 500
Salt Lake City, UT 84116
Tel: 801-975-7200
Toll Free: 800-945-7730
Fax: 801-977-0087
sales@clearone.com

Latin America
Tel: 801-974-3621
global@clearone.com

EMEA
Tel: 44 (0) 1189 036 053
global@clearone.com

APAC
Tel: 801-303-3388
global@clearone.com