



The Power of We™

Scopia® PathFinder Firewall Traversal

Secure H.323 Remote Connectivity



Scopia PathFinder Firewall Traversal is a complete firewall and NAT traversal solution enabling secure connectivity between enterprise networks and remote sites. PathFinder maintains the security and advantages of firewall and NAT over video networks and allows seamless integration with existing video conferencing systems and infrastructure components.

PathFinder is easily deployed in the DMZ and can be installed on any standalone computer in the network. PathFinder requires no changes to dial plans or E.164 numbers in the conferencing application. Built on a hardened Linux operating system including access control, AES encryption and client authentication, PathFinder provides its own security to prevent attacks by malicious devices. Firewall and NAT problems are handled without upgrading devices or compromising security, and call quality is maintained through QoS support.

Highlights

- Works with Any Firewall, Endpoint and Gatekeeper
- Easily Deployed
- Secure
- Scalable and Distributed
- H.460 Compliant





With more than 100 years as a leader in communications, Avaya can help your company maximize productivity with the communications solutions specific to the needs of your workforce.

Works with Any Firewall, Endpoint and Gatekeeper

Solves near-end and far-end firewall issues allowing you to maintain existing security measures with no changes to existing firewalls. All H.323 standards-based endpoints and gatekeepers are supported. Retains all Scopia ECS Gatekeeper features: enhanced dial plan, hierarchy, conference hunting, CDR records and API for integration.

Easily Deployed

Easily deployed in the DMZ while the PathFinder client can be installed on any standalone computer in the network. Simply continue using your existing firewall, gatekeeper, and video conferencing endpoints. No changes in dial plans or E.164 numbers are required.

Secure

Hardened Linux operating system, client with built-in access control to prevent attacks by malicious devices, AES encryption and client authentication provide intensive security and peace of mind for the administrator.

Scalable and Distributed

A single PathFinder client deployed can support many individual endpoints. PathFinder servers can be neighbored and load balanced for additional capacity and backup. Clients hunt backup servers in the event the primary server is unavailable.

H.460 Compliant

Providing the latest in video conferencing firewall traversal technology.

Scopia PathFinder Specifications

Functionality

- Both near-end (enterprise firewall/ NAT) and far-end (remote site) firewall traversal
- Handles firewall and NAT problems without device upgrade or security compromise
- Suitable for service providers and enterprises
- H.460.18/.19 compliant including support for multiplexed media
- Easy to implement and deploy

Capacity

- Up to 100 concurrent calls
- Up to 600 registered devices
- Server neighboring for large enterprises and scalability
- Neighboring and load balancing by F5 and Radware

Call Control

- Enterprise gatekeeper support - allows deploying a local gatekeeper at the remote site
- Full dial plan support

Security

- Secured - hardened Linux platform
- Closed 1U chassis
- AES encryption for call privacy

Management

- Web interface for easy management
- SSH console interface for administration
- Role based user management for user and client definition
- Monitor all connected clients
- View client details, registered endpoints and active calls
- Connect and disconnect clients
- Multi-level configurable call logging
- Configurable tunneling port for administrator flexibility

Scopia Management Additional Features

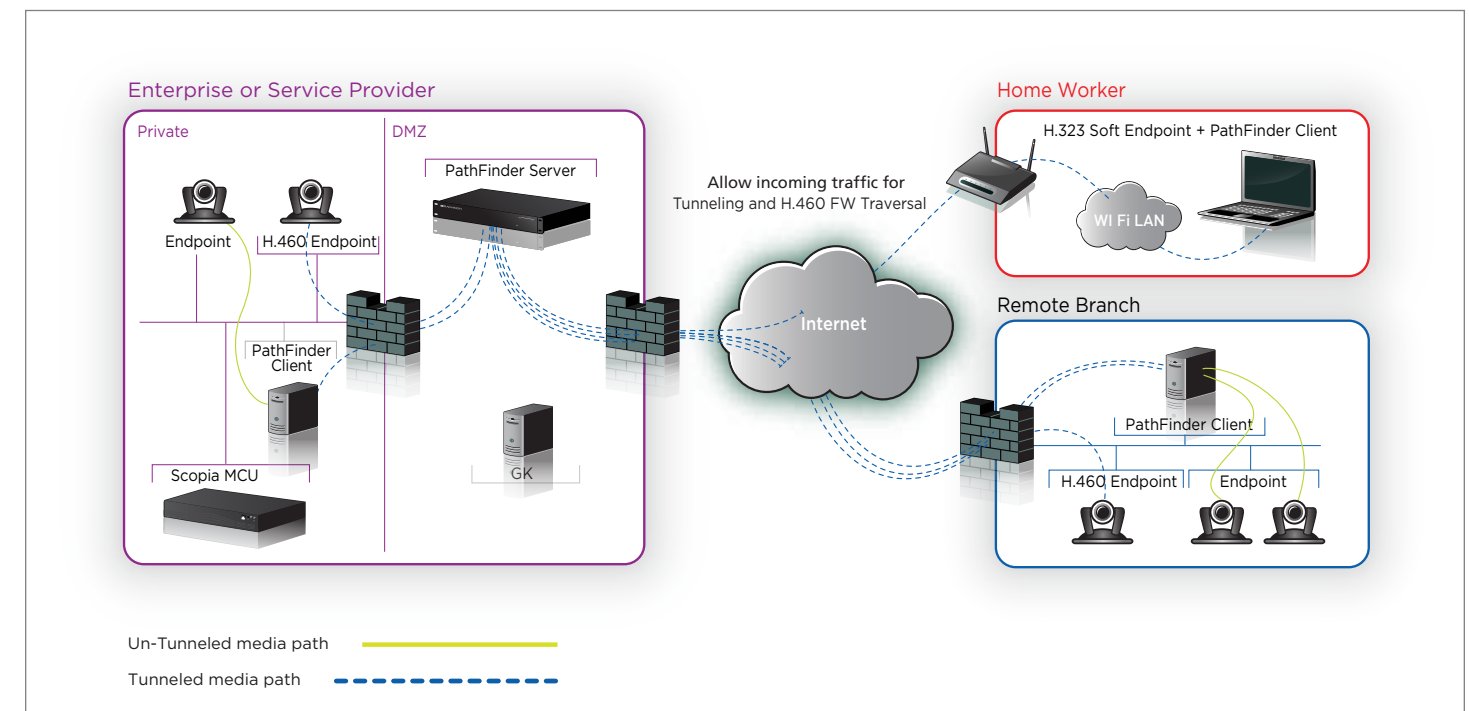
- Centralized management of video conferencing infrastructure
- Real-time monitoring
- Enhanced problem ticket handling with real-time alarm notifications
- Centralized log collection
- Simplified problem handling through collection of all necessary logs and traces into a file package for troubleshooting

Scopia PathFinder Client

- Software, deployed on any computer in the remote site
- Available for Windows / Linux
- One client serves many endpoints
- Can be deployed together with software endpoints
- Multiple server failover options
- Security mechanism for the administrator to define which devices are accessible via the client
- Supports any H.323 endpoint
- Can be embedded in the endpoint (project based)
- Client authentication - each client uses a dedicated password managed by the server

Client Requirements

- Operating System: Microsoft Windows, Red Hat Linux
- Please see Release Notes for detailed operating system requirements
- Intel Pentium IV, 2 GHz or higher processor
- 256 MB RAM
- 50 MB hard disk space



Scopia PathFinder Typical Deployment - Server is in the Enterprise DMZ, Client in Every Remote Site

Scopia PathFinder Specifications (cont.)

Support Services

Avaya offers a full set of services to help maximize a video investment. Strategic and technical consulting along with deployment and customization services ensure that video collaboration rollouts are successful and aligned to business requirements.

Avaya Video Support Services maximizes up time with software updates, upgrades, remote maintenance and expert repairs.

Video Managed Services enable organizations to enjoy a predictable, high-quality video collaboration experience that drives optimal levels of user adoption on any size deployment.

About Avaya

Avaya is a global provider of business collaboration and communications solutions, providing unified communications, contact centers, networking and related services to companies of all sizes around the world. For more information please visit www.avaya.com.

External Interfaces

- Dual Gigabit NICs (rear)
- 1 x DB9 serial port connector (rear)
- 4 x USB 2.0 connectors (rear)

PathFinder Chassis

- W: 43.0 cm (16.9")
- D: 50.8 cm (20")
- H: 43.0 cm (1.7")
- 19-inch rack-mountable with flanges
- 100-240 VAC, 50-60 Hz, auto switched
- Environmental Characteristics
- Operating temperature: 10° to 35°C (50° to 95°F)
- Storage temperature: -40° to 65°C (-40° to 149°F)
- Relative storage humidity: 90% relative humidity, non-condensing at 35°C (95°F)

To learn more about the Scopia PathFinder Firewall & NAT Solution, contact your Avaya Account Manager, Avaya Authorized Partner or visit avaya.com for white papers, case studies and other information showcasing Avaya solutions in action.